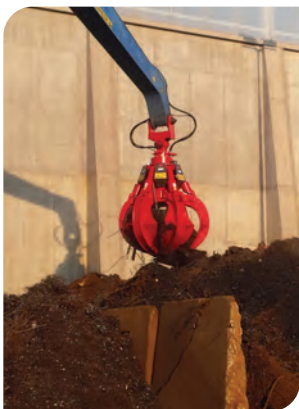
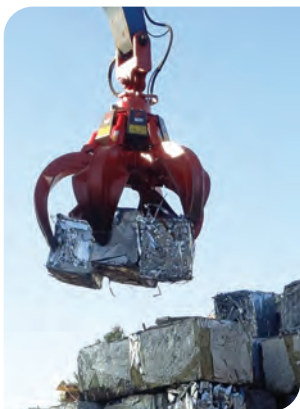




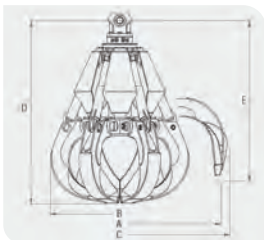
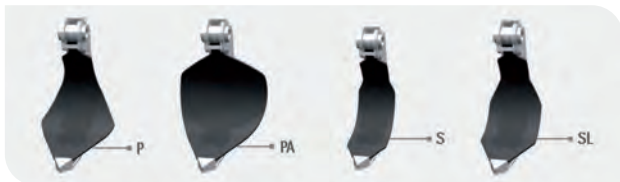
# BP

## ORANGE PEEL GRAPPLE

Designed for handling jobs, thanks to the different shell sets available, it can be perfectly adapted to the specific material to move. The powerful cylinders are protected to ensure durability and the hydraulic rotation enhances working precision



## Shell Type



- **Different shell types** are available to ensure a perfect match with the job and grant the best solution to handle different materials

- All models can be fitted with a hydraulic rotation device to improve **handling precision**

## TECHNICAL DATA

MODEL			BP400		BP500		BP550	
Capacity	l		400		500		550	
Shells	nr		5	6	5	6	5	6
Excavator weight	t		15-20		18-23		22-28	
Tool weight	kg	without rotation	930	1020	1140	1240	1300	1350
		hydraulic rotation	1000	1090	1200	1300	1450	1580
Hydraulic working pressure	bar		300	300	300	300	300	300
Oil Flow	l/min		120	140	160	180	160	180

### DIMENSIONS

A	mm		1750	1930	2000
B	mm		1240	1320	1385
C	mm		1960	2140	2215
D	mm	without rotation	1620	1780	1810
	mm	hydraulic rotation	1750	1905	1920
E	mm	without rotation	1370	1470	1545
	mm	hydraulic rotation	1510	1600	1655

We are constantly improving our products and therefore we reserve the right to change the design and technical specifications without prior notice.



- Cylinders and hoses are protected to guarantee the **maximum durability**
- To ensure a long working life, the whole tool is manufactured from **high-resistance steel plates**

BP600		BP800		BP1000	BP1250		BP1500		BP2000	
600		800		1000	1250		1500		2000	
5	6	5	6	5	5	6	5	6	5	6
23-30		24-32		30-40	32-40		35-45		35-45	
1500	1630	1630	1700	-	-	-	-	-	-	-
1650	1780	1780	1900	2450	2600	2900	2850	3000	3000	3200
300	300	300	300	300	300	300	300	300	300	300
180	200	180	200	250	250	300	250	300	250	300
2110		2320		2400	2520		2760		3030	
1510		1620		1840	1970		2040		2180	
2290		2530		2640	2760		3040		3330	
1870		1980		-	-		-		-	
1980		2090		2265	2270		2400		2530	
1580		1600		-	-		-		-	
1680		1710		1860	1910		1960		1990	