



SD

SHEAR DISMANTLER

A shear that is dedicated to vehicle dismantling and in height demolitions. Its narrow jaw design ensures great precision in selecting parts picked and moved while the powerful cylinder grants high cutting power. It is an optimal tool for the scrap professional to strip out cars, trucks or wagons



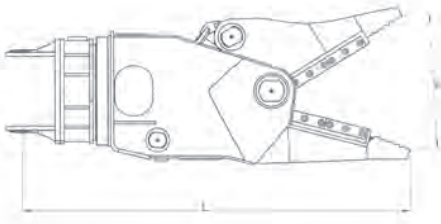


- The **optional blades and wire pads** make of the SD an extremely precise tool dedicated to **vehicle parts recycling**
- The **continuous hydraulic rotation** enables **precise positioning** during in height demolitions and ground operations, while its robust components grant **high durability**
- The **thin jaws** are designed for precision jobs, such as engine and gearbox extraction from vehicles
- The long and straight blades allow **precise cuts**. All the blades are interchangeable and can be turned three times before replacement
- The **compact and resistant structure** is manufactured with high-resistant steel to last in years

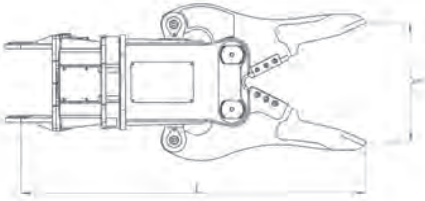
TECHNICAL DATA

MODEL		SD12	SD20
EXCAVATOR WEIGHT	t	10-18	18-26
TOOL WEIGHT *	kg	950	1760
OPENING	mm	700	795
HEIGHT	mm	1800	2100
WORKING PRESSURE	bar	200-250	300-350
OIL FLOW	l/min	60-100	180-200

* Tool weight does include Mantovanibenne top bracket.

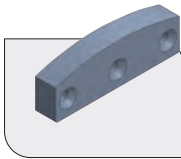


MODEL SD20

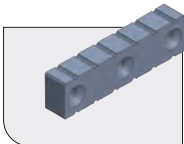


MODEL SD12

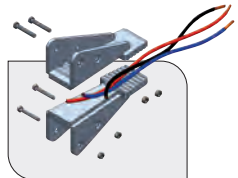
OPTIONAL



WIRE-CUTTING BLADE



STANDARD BLADE



WIRE PADS